

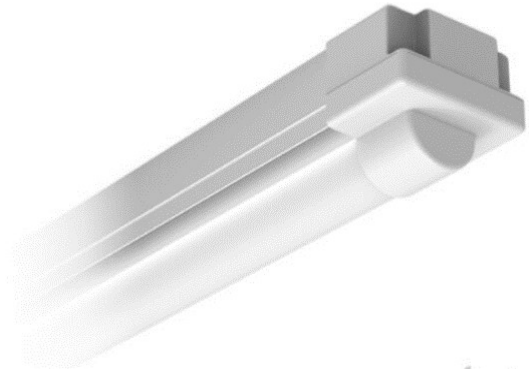


Illuminate New Heights with Everest LED Batten

Introducing the Everest LED Batten, a unique design replacing traditional fluorescent pop-packs. Available in standard and high-output versions, this luminaire allows you to conquer any lighting challenge.

Just like reaching the summit of Mount Everest, this fixture elevates your lighting experience. It offers exceptional illumination, superior energy efficiency, and impressive longevity, leaving traditional fluorescent options in the shadows.

With Everest, you'll reach the peak of lighting success. Illuminate your space with confidence, knowing that you've scaled the heights of lighting solutions. For Emergency - Add 'E' to Code For DALI Dimmable - Add 'D' to Code



GENERAL OVERVIEW

CODE	HOUSING	LENS	WEIGHT (G)	WEIGHT (N)	LENGTH (A)	WIDTH (B)	DEPTH (D)
EVEREST1001	Steel Powder Coated	Polycarbonate	3.0	2.8	1218	57	65
EVEREST1002	Steel Powder Coated	Polycarbonate	4.0	3.8	1218	57	65
EVEREST2001	Steel Powder Coated	Polycarbonate	4.0	3.8	1518	57	65
EVEREST2002	Steel Powder Coated	Polycarbonate	5.0	4.8	1518	57	65

PRODUCT SPECIFICATION

CODE	WATTAGE	LUMENS	EFFICIENCY	CCT	BEAM ANGLE	IP	IK
EVEREST1001	25	2700	108	4k	120	20	06
EVEREST1002	47	4900	104	4k	120	20	06
EVEREST2001	32	3200	100	4k	120	20	06
EVEREST2002	60	6000	100	4k	120	20	06

ELECTRICAL SPECIFICATION

CODE	CHIP SET	DRIVER	PFC	COLOUR	VOLTAGE	CLASS	TEMPERATURE
EVEREST1001	Sinotron 2835	Tridonic	0.9	White	220-240	I	-10° to + 40°
EVEREST1002	Sinotron 2835	Tridonic	0.9	White	220-240	I	-10° to + 40°
EVEREST2001	Sinotron 2835	Tridonic	0.9	White	220-240	I	-10° to + 40°
EVEREST2002	Sinotron 2835	Tridonic	0.9	White	220-240	I	-10° to + 40°

ACCREDITATIONS & CERTIFICATION

CODE	COUNTRY OF DESIGN	INTENDED MARKETS	APPROVALS	WARRANTY
EVEREST1001	United Kingdom	UK : Europe : UAE	CE : BS EN 60598 - 2 - 1	5 Year
EVEREST1002	United Kingdom	UK : Europe : UAE	CE : BS EN 60598 - 2 - 1	5 Year
EVEREST2001	United Kingdom	UK : Europe : UAE	CE : BS EN 60598 - 2 - 1	5 Year
EVEREST2002	United Kingdom	UK : Europe : UAE	CE : BS EN 60598 - 2 - 1	5 Year

